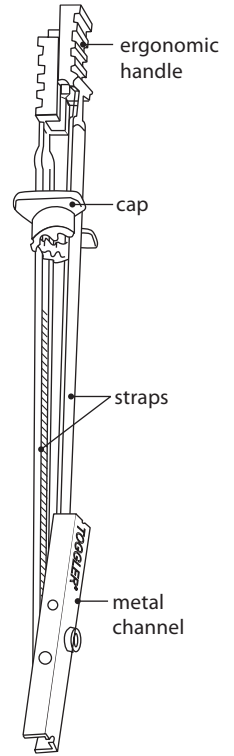


Heavy-duty hollow-wall anchors carry twice the load in a smaller hole than standard anchors

Key Features/Benefits

- **New, patented strap design** with sturdier straps and smaller ratchet interval:
 - Adjusts more precisely and snaps off flush to surface
 - Pushes aside insulation
- Anchor is pre-assembled and ready for immediate use
- **Holds up to twice the load of standard wing toggles**
- Uses a shorter bolt; no need to carry a wing
- Resists vibration and shock
- Pre-installs without fixture or bolt
 - Installs in a significantly smaller hole (up to 50%) than standard wing toggle
 - Maintains integrity of wall, ceiling, or floor, strengthening the fastening
- Does NOT spin when bolt is installed with gun
- New plating[†] is 7 times more corrosion-resistant than B633-85 Type III, SC1 plating
 - Provides 350 hours salt spray resistance
- Does NOT fall behind wall when bolt is removed; fixture can be removed and reinstalled as often as desired



Specifications, Listings and Approvals

Materials*:

- Metal channel: Trivalent (RoHS-compliant) zinc-plated 1010 cold rolled steel or 304 stainless steel
- Straps and handle: High-impact polystyrene*
- Cap: Translucent polypropylene copolymer*

Channel Thread

- UNC or metric machine screw thread

Federal Specifications: Type V anchors FFB588-D (superseded)

* **NOTE:** The plastic straps and cap washer are positioning and retention elements only. They do not otherwise function as anchoring elements. Holding is dependent only on a metal bolt to metal channel connection.

Order Information**

[†] New plating available only on BA, BB, BM5, BM6, BAL, BBL, BM5L and BM6L.

Catalog Number		Style	Grip Range	Drill Dia.	Thread Size	Bolt Size (In Bags Only)	Box/Bag (pcs.)	Master Carton (pcs.)
Zinc-coated Carbon Steel	304 Stainless Steel							
24013	24020	BA	3/8" – 3-5/8"	1/2"	3/16-24	–	100	1000
25013	25020	BA	3/8" – 3-5/8"	1/2"	3/16-24	–	50	500
50375		BA	3/8" – 3-5/8"	1/2"	3/16-24	3/16-24	10	120
50350	50435	BA	3/8" – 3-5/8"	1/2"	3/16-24	3/16-24	2	200
24014	24021	BB	3/8" – 3-5/8"	1/2"	1/4-20	–	100	1000
25014	25021	BB	3/8" – 3-5/8"	1/2"	1/4-20	–	50	500
50425		BB	3/8" – 3-5/8"	1/2"	1/4-20	1/4-20	10	120
50400	50440	BB	3/8" – 3-5/8"	1/2"	1/4-20	1/4-20	2	200
21017		BE	3/8" – 2-1/2"	3/4"	5/16-18	–	25	250
21015	21022	BC	3/8" – 2-1/2"	3/4"	3/8-16	–	25	250
21016	21023	BD	3/8" – 2-1/2"	3/4"	1/2-13	–	25	250
25029	25030	BM5 Metric	3/8" – 3-5/8"	1/2"	M5 (5 mm)	–	50	500
25024	25026	BM6 Metric	3/8" – 3-5/8"	1/2"	M6 (6 mm)	–	50	500
21031	21032	BM8 Metric	3/8" – 2-1/2"	3/4"	M8 (8 mm)	–	25	250
21035	21036	BM10 Metric	3/8" – 2-1/2"	3/4"	M10 (10 mm)	–	25	250
21049	21059	BAL Long	2" – 9-1/2"	1/2"	3/16-24	–	50	500
21050	21060	BBL Long	2" – 9-1/2"	1/2"	1/4-20	–	50	500
21064	21065	BM5L Metric Long	2" – 9-1/2"	1/2"	M5 (5 mm)	–	50	500
21025	21061	BM6L Metric Long	2" – 9-1/2"	1/2"	M6 (6 mm)	–	50	500

** All bags and boxes must be purchased in master carton quantities, except for stainless steel boxes, long toggle bolts and metric sizes. 10-24 thread = 3/16-24

Ultimate Tensile Pull-Out Values (lb.)

Anchor	UNC Thread	Drill Dia.	1/2" Drywall	5/8" Drywall	*1/2" With 25 Gauge Stud	*5/8" With 25 Gauge Stud	Concrete Block	1/2" Steel Plate	Stainless In 1/2" Steel ³
BA	3/16"-24	1/2"	238	356	412	462	802	918 ¹	1,193 ¹
BB	1/4"-20	1/2"	265	356	425	464	1,080	1,283 ²	1,735 ¹
BE	5/16"-18	3/4"	270	480	439	477	1,400	1,680	2,118
BC	3/8"-16	3/4"	275	576	466	488	1,745	1,692	2,523 ¹
BD	1/2"-13	3/4"	275	576	468	513	**2,038 ²	2,605	3,150

* Failure measured as breakage of drywall portion

** Failure of block

- 1 Stainless steel bolts used
- 2 Hardened bolts used
- 3 Stainless steel channel tested with stainless bolts in 1/2" steel plate

Ultimate Shear Values (lb.)

Anchor	UNC Thread	Drill Dia.	1/2" Drywall	5/8" Drywall
BA	3/16"-24	1/2"	247	298
BB	1/4"-20	1/2"	241	324
BC	3/8"-16	3/4"	292	406

- Industry standards recommend 1/4 of ultimate test load.
- Holding strength for a SNAPTOGGLE heavy-duty hollow-wall anchor varies directly with the strength and condition of the substrate and the bolt size, and inversely with variations in hole diameter and the distance of the load from the wall.
- All figures in pounds. Pull-out values based on independent laboratory tests done according to U.S. Government standards. They should be used as guides only and cannot be guaranteed. The age, condition, and capacity of the substrate must be considered.

Installation Instructions

Minimum bolt length (BL) = thickness of wall or ceiling (W) + thickness of item being fastened (T) + 1/2"

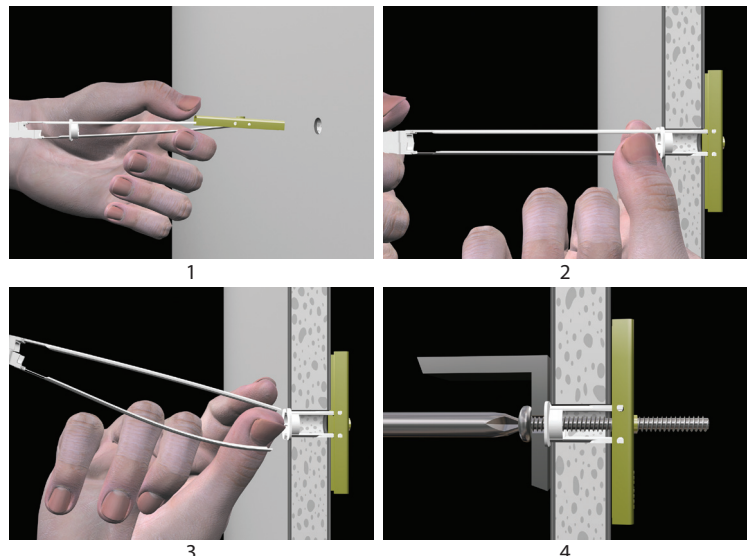
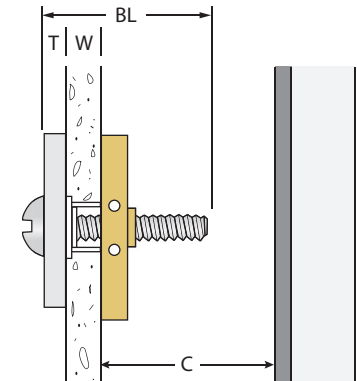
Minimum clearance behind wall (C) : 1-7/8"

Minimum wall or ceiling thickness (W): 3/8"

Maximum wall or ceiling thickness (W):

- 3-5/8" for BA & BB anchors
- 2-1/2" for BC, BD & BE anchors
- 9-1/2" for BAL & BBL anchors

1. Drill appropriate size hole per charts above. Hold metal channel flat alongside plastic straps and slide channel through the hole.
2. Hold ends of straps together between thumb and forefinger and pull toward you until channel rests behind wall. Ratchet cap along straps with other hand until flange of cap is flush with wall.
3. Place thumb between straps at wall. Push thumb side to side, snapping off straps level with flange of cap.
4. Place item over flange. Insert bolt and tighten until snug against item, then stop. Use machine screw or bolt to match thread in metal channel.



NOTES:

- Gently hand engage at least one thread of bolt with channel before using screw gun to avoid cross threading the bolt.
- For maximum shear holding, orient channels vertically to floor.
- Use hardened or stainless bolts for maximum weight load.
- Enlargement of specified insertion holes size will reduce anchor effectiveness.
- Remove anchor by removing bolt, inserting screwdriver and popping channel behind wall off plastic straps with a sharp blow.
- All SNAPTOGGLE anchors meet the requirements of Type V anchors in Federal Specification FFB-588-D (superseded).
- All bolts and threaded rods used with SNAPTOGGLE anchors must meet ANSI or HR 3000 standards to ensure safety and effectiveness.